

Bevel Tech Group, INC.

We do it RIGHT the FIRST time, EVERY time!

PARTNER WITH US FOR YOUR TURNAROUND AND MAINTENANCE NEEDS!

Services Available 24 Hours A Day, 7 Days A Week



We provide services on-site as well as at our 8 acre facility in Geismar, La. Our 12,000 sq. ft. full-service machine shop houses our field service equipment and contains multiple shop lathes, milling machines, drill presses, CNC machines, a grinding area and a millwright shop area.

**EQUIPMENT IS 100% OWNED AND IN STOCK,
Saving our clients valuable time and money!**

INDUSTRIES SERVED:

OIL & GAS, PETROCHEMICAL, POWER, CHEMICAL, PAPER PULP, REFINING, MARITIME, PIPELINE (MIDSTREAM), ONSHORE & OFFSHORE FACILITIES

SERVICES PROVIDED WITH COMPETITIVE PRICING

- FIELD MACHINING
- FULL SERVICE MACHINE SHOP
- CERTIFIED MILLWRIGHT SERVICES (TURNKEY)
- HOT TAPS
- HANDS FREE COLD CUTTING & BEVELING
- MECHANICAL REPAIRS
- HYDROSTATIC ISOLATION PLUGS
- HYDROSTATIC WELD TEST PLUGS
- TORQUING & TENSIONING
- FLANGE FACING
- MOTOR/PUMP BASE MILLING
- DRILLING AND TAPPING
- FABRICATION SERVICES
- EQUIPMENT PRESERVATION
- LINE BORING
- FARO LASER TRACKER METROLOGY
- SCR DEEPWATER PIPE MACHINING
- SCR LASER PIPE END DIMENSIONING
- COATING
- GROUTING SERVICES
- LASER ALIGNMENT- ENGINES, GEAR BOXES & PUMPS

TORQUING - TENSIONING - HOT TAPS - METROLOGY SERVICES



Shop & Field Machining

OD & ID Flange Facing Machines
Clamshell Cutting Machines
Pipe Beveling Machines
Portable Milling Machines
Stud Removal
Line Boring



The **FARO Laser Tracker** is a highly precise, portable coordinate measuring machine that enhances our ability to build products, optimize processes, and deliver solutions with speed. The FARO Vantage laser tracking tool enhances the precision of our metrology services.

Controlled Bolting Utilizing Hydraulic & Tensioning Tooling

- Technicians are certified to ensure compliant bolting from break out, connection and assembling
- Low profile tools available for tight clearance applications
- Tensioning studs simultaneously for leak free connections
- Day-to-Day maintenance activities
- TAR activities



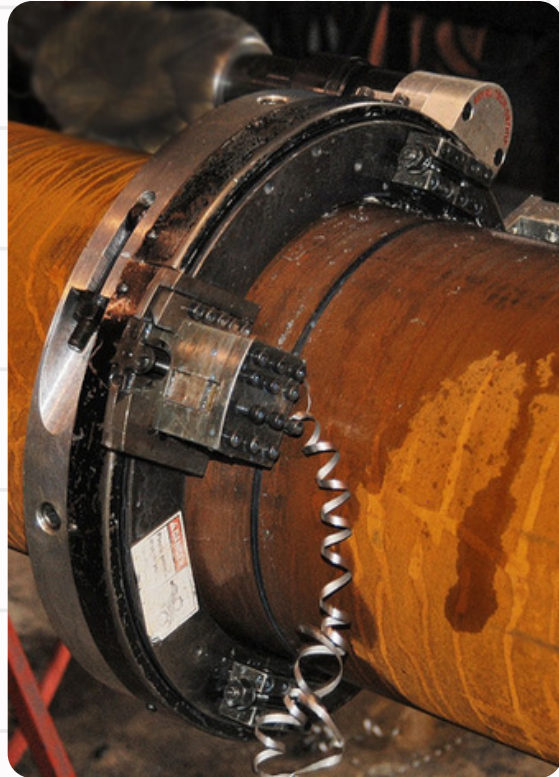
Our team of seasoned professionals is highly trained to perform **HOT TAPS** (from 1/2" up to 12"), ensuring safe and efficient execution. We use carefully designed, well-maintained equipment to minimize any risk of failure.



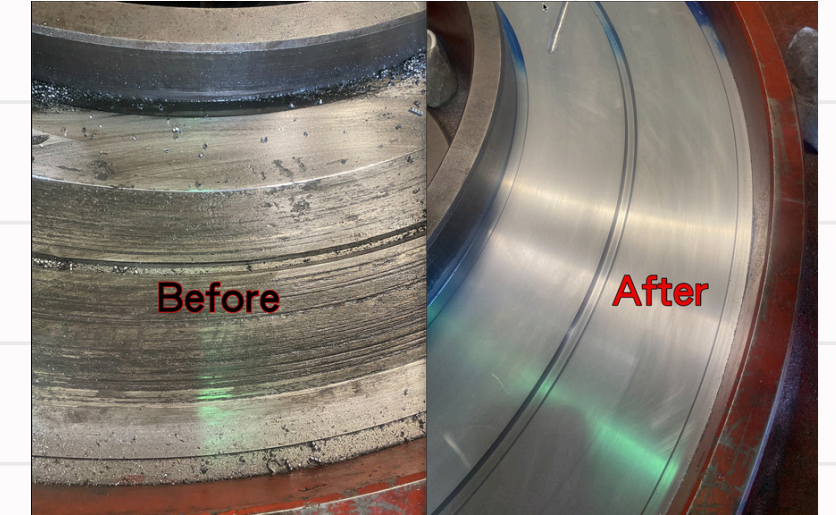
***Bevel Tech Group, Inc. has accredited National Center for Construction Education & Research (NCCER) certified technicians on staff.**

Bevel Tech Group, INC.

CUTS - BEVELS - MACHINING - MILLWRIGHTS - FLANGE FACING - DRILLING - TAPPING



Bevel Tech Group, Inc. provides a variety of clamshell pipe cutting machines, ranging from 2" to 120", designed for **hands-free** operation. These innovative machines prioritize **safety** by keeping operators out of the hazard zone during cutting and beveling, delivering a ready-to-fit surface upon completion.

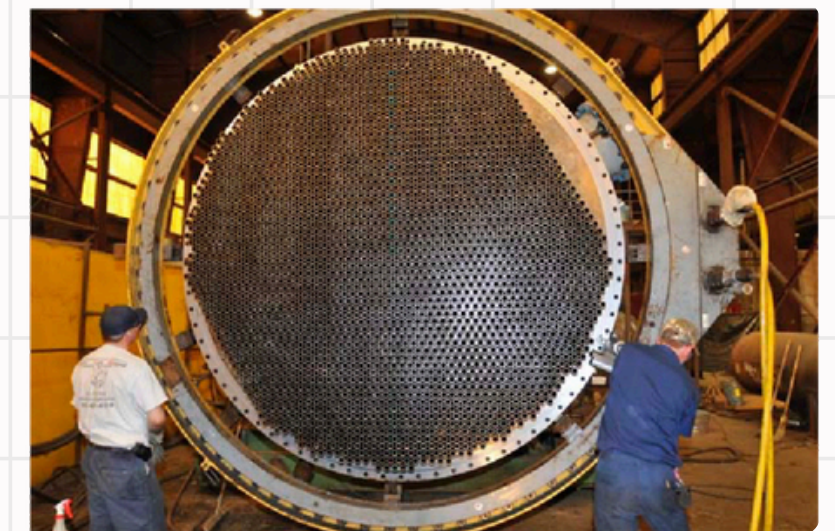


Our portable ID flange machines can resurface flanges from 4 ft. to 18 ft.
The hands-free OD mount flange facing machines are customizable to fit any job size, accommodating diameters up to 120".



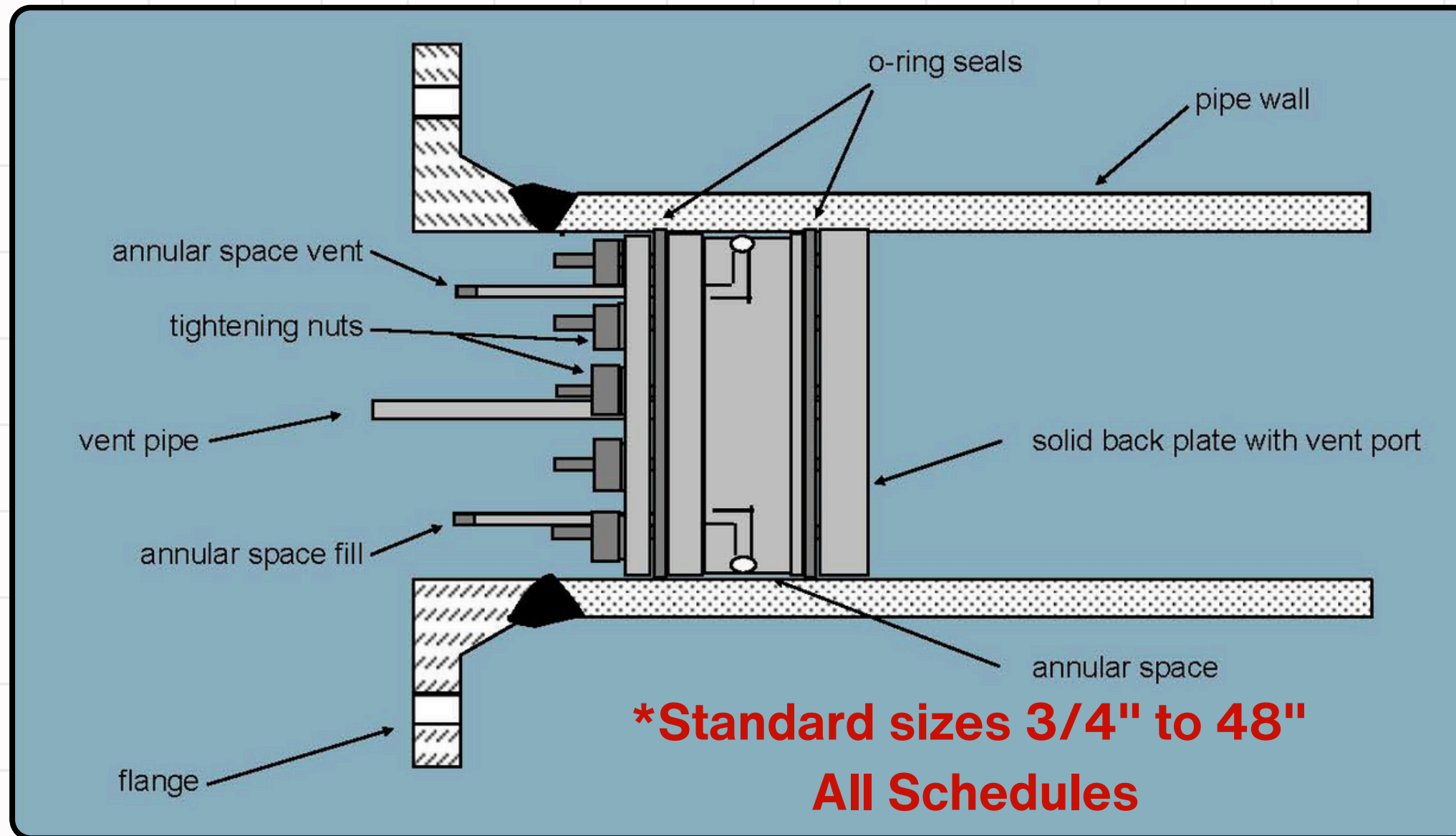
This 60" portable milling machine is ideal for milling pump and motor pads.

Our skilled and certified millwrights excel across a wide range of industrial services. From precise machining and mechanical repairs to specialized work on pumps, gearbox seals, compressors, turbine repairs, grouting, and preventative maintenance, our team ensures top-notch solutions!



Bevel Tech Group, INC.

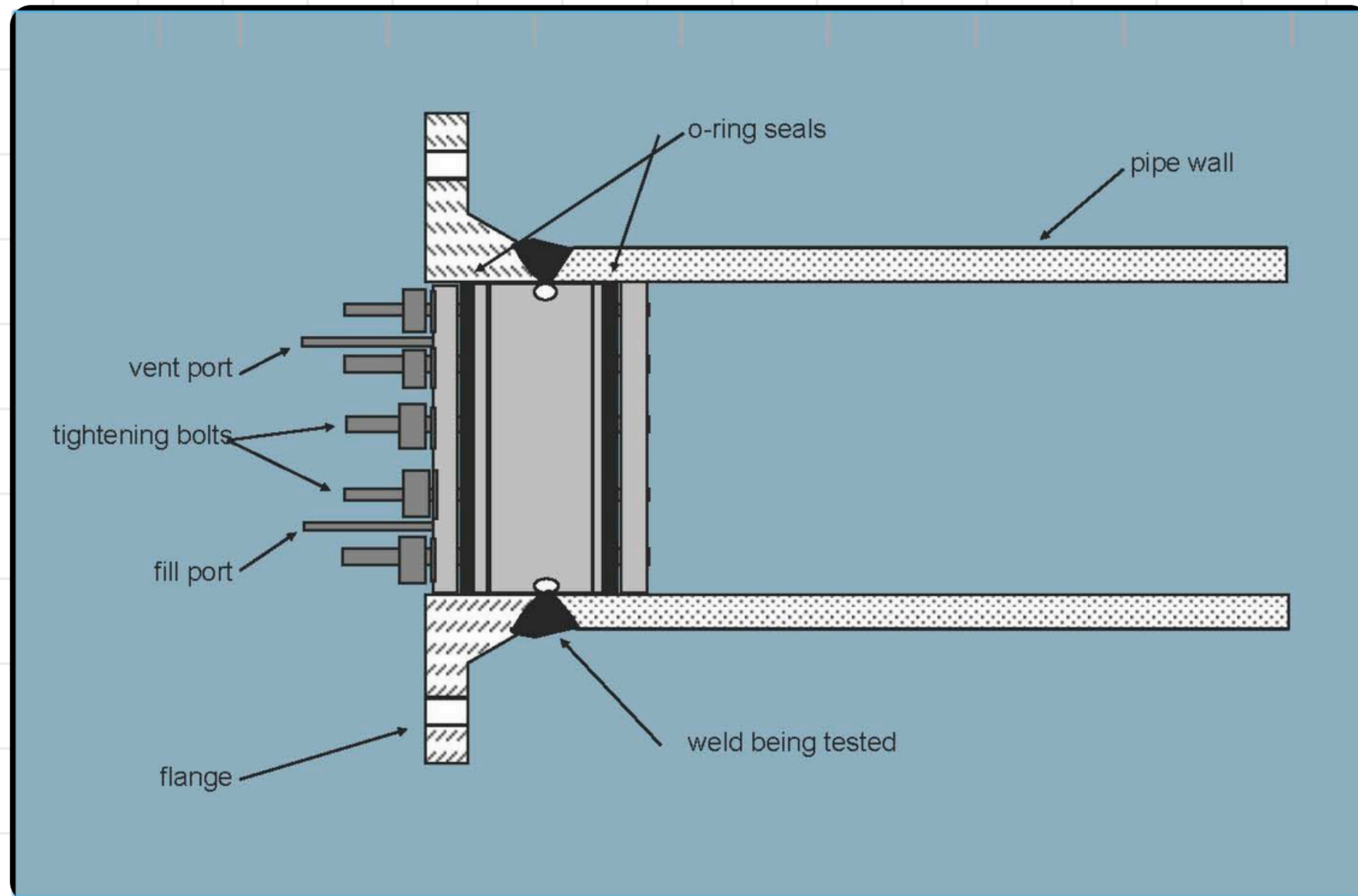
HYDROSTATIC ISOLATION TOOL



Bevel Tech Group's pipeline isolation tooling can positively isolate and monitor potentially explosive vapors while performing the hot work on the upstream line

- Ability to monitor seals with a pressurized gauge
- Vent gauge monitors upstream activity
- Vent upstream activity safely away from Hot Work
- Hydrostatic Isolation circulates medium around seals for high heat procedures such as Pre-Heat, PWHT, & Bake Outs
- Ability to isolate through elbows and tees 6" and larger
- BTG has the ability to manufacture job-specific tooling

HYDROSTATIC WELD TEST TOOL

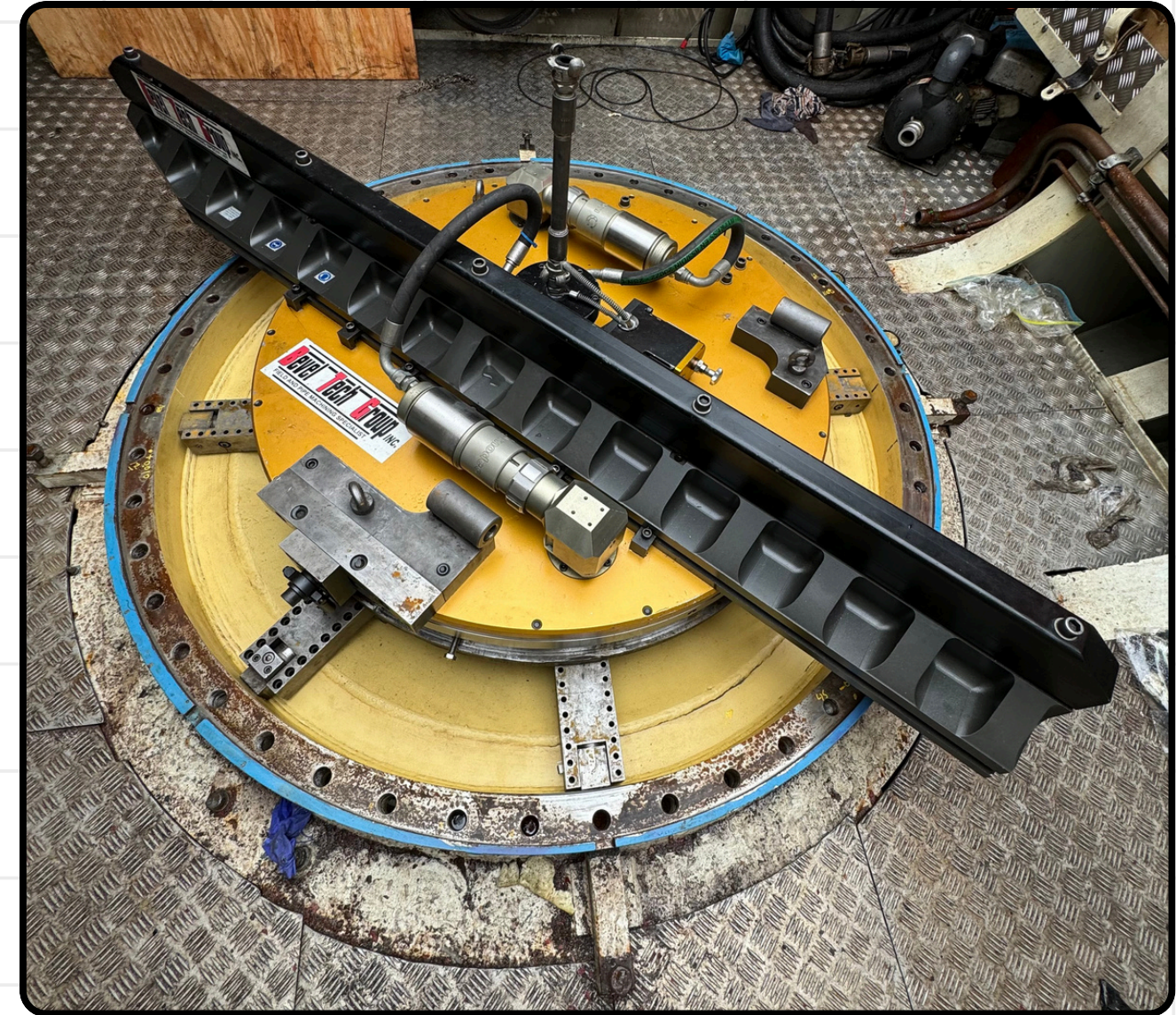


Our hydrostatic weld test tool tests the integrity of the weld, the heat-affected zone, and the flange. This tool is installed and positioned over the weld, and a localized hydrostatic test is performed, using just ounces of medium. Our standard tools can reach pressures up to 2250 psi. With lead time and planning, we can develop a customized tool to reach pressures up to 5000 psi. Our tools can test weld neck flanges, slip-on flanges, socket weld flanges, orifice flanges, branch connections, Grayloc flanges, and more.

MARINE SERVICES

Bevel Tech Group, Inc. understands the need for proper installation and chocking services of facilities and marine machinery. We use industry-leading products to ensure the project is completed safely, correctly, and on time.

- Partnering for Safety-First Solutions
- Line Boring
- Laser Alignments of Engines, Gear Boxes, Generators, & Pumps
- Flange Facing for Z-Drives & Crane Pedestals
- Mechanical Fabrication & Machining
- Supply & Application of Chocking Resins



From start to finish, we are the leading maritime service provider to keep your fleet moving!

Bevel Tech Group, INC.

FULL SERVICE MACHINE SHOP



We provide comprehensive services at our 12,000 sq. ft. full service machine shop. Whether on-site or in-shop, we can meet your needs. Our inventory is 100% FULLY OWNED and in stock to offer efficient & cost-effective solutions.



SERVICES AVAILABLE 24 HOURS A DAY, 7 DAYS A WEEK!

Bevel Tech Group, INC.

MISSION

To provide unparalleled solutions for our clients, leveraging advanced equipment, skilled craftsmanship, and a commitment to safety and precision

VISION

To lead the industry in innovative, sustainable and efficient solutions, driving global progress through exceptional workmanship and services, cutting-edge equipment and commitment to environmental responsibility

CORE PRINCIPLES

- Dedication to excellence in **SAFETY**, precision, and performance
- Respect for all clients and employees
- Continuous improvement, encouraging feedback & proactively seeking opportunities to optimize processes and services
- Rapid response time to serve our clients in time-sensitive situations

Bevel Tech Group, INC.

CLIENT SATISFACTION

We serve as a trusted partner in our clients' success and satisfaction by:

- Understanding your needs
- Providing the best service for your needs
- Offering competitive pricing

Ensuring a highly trained workforce that operates safely in a secure environment has always been and will continue to be a top priority for Bevel Tech Group, Inc.

Bevel Tech Group, INC.



We take pride in our ongoing success in employee safety and remain vigilant, never relying on past achievements.

Staying focused on tasks at hand ensures our status as a consistently safe working company.

Weekly safety meetings and performing JSA's before a job begins are integral to our commitment.

Contact us for your turnaround and maintenance needs and discover how our expertise can save you both TIME and MONEY!

**4030 Bowden Road
Geismar, La 70734
(225) 677-8276**

www.beveltechgroup.com